

other air tools



Air inserting tool IP 900

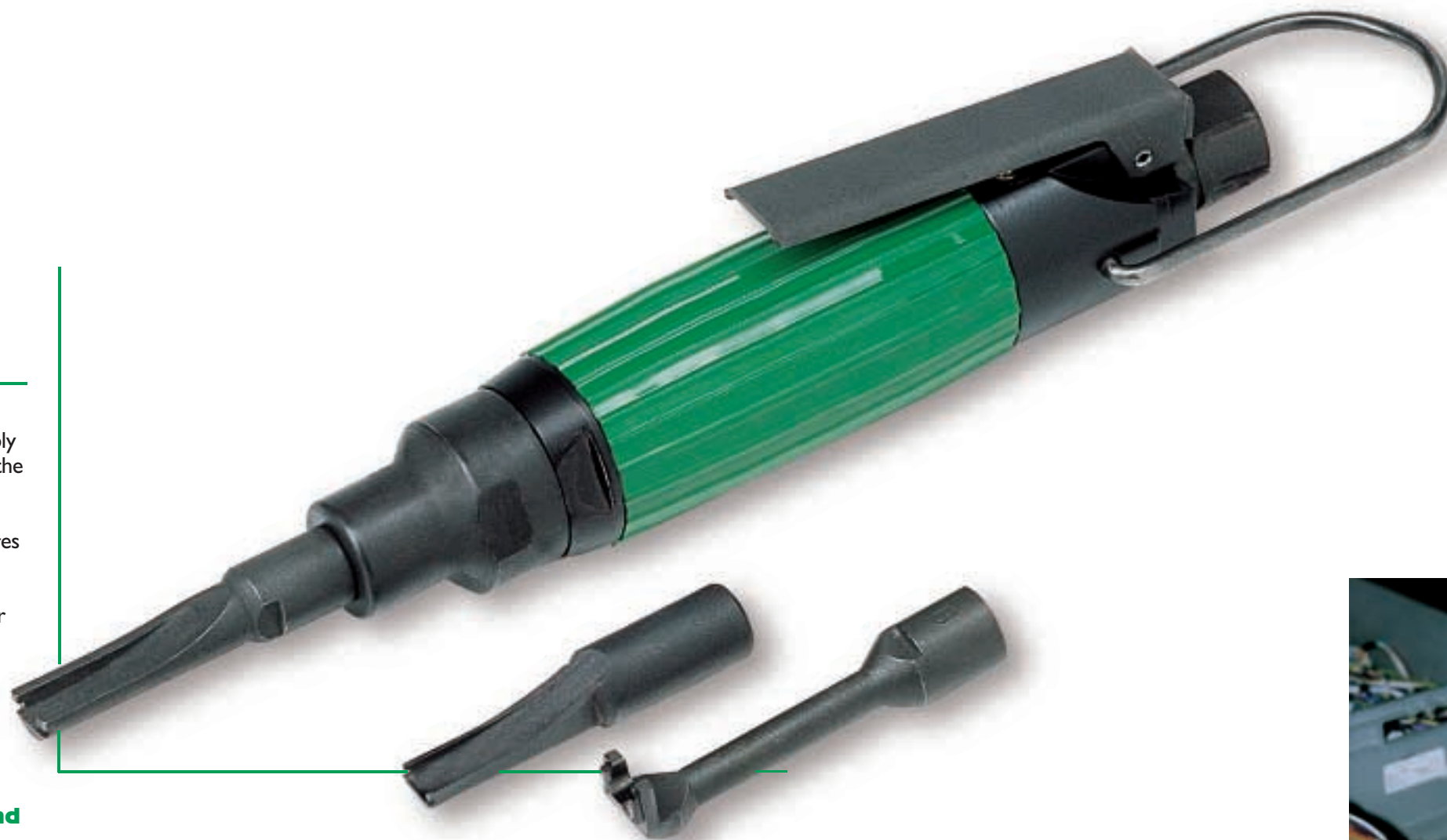
- **For easy and accurate fitting of electric connectors**



Air inserting tool IP 900

For easier and greater accuracy in assembly

Great use is made of electric connectors in the numerous assembly operations carried out especially in the home appliance, motor vehicle and electromechanical sectors. Insertion of these connectors requires very long and difficult manual operations by the worker who still needs to use his own hands or other improper equipment. Fiam has designed a special light and compact air inserting tool which, with only a few impulses, **makes the insertion of connectors fast and easy in all their applications, guaranteeing the greatest ergonomics and maximum accuracy when assembling electric connectors.**




Its reduce dimensions make it particularly easy to handle.



The electric connector can be inserted quickly and easily.



TYPE OF THE TOOL		STROKES	STARTING SYSTEM	WEIGHT	DIMENSIONS (mm)	COMPRESSED AIR CONSUMPTION	AIR INLET	NOISE LEVEL
Model	Code	min.	Type	Kg.	Ø x l	l/s		dBA
IP900	169975110	900		0,440	32x204	<1	1/4" gas	78



LEVER

Standard equipment (supplied with the tool)

- Hanging ring
- Use and maintenance manual

- The figures shown are measured at a pressure of 3,5 bar (ISO 8662-1), the recommended operating pressure. Max operating pressure: 6,3 bar
- Noise level has been measured in accordance with PN8NTC1.2 standards.
- The code number must be used when ordering.

The models highlighted in green are usually available from stock.

The data given in the table are indicative and can be changed without prior notice. The values indicated for noise are obtained in the laboratory, performing tests that comply with the standards stated, but alone are not sufficient for calculating risks. Values measured in the single work places may be higher than those stated. The values of actual exposure and consequent risks are specific and depend on the operator's method of work, the type of work piece and the work place, as well as the operator's time of exposure and his physical conditions. Fiam cannot be held responsible for any consequences deriving from the use of the information in the table when evaluating risks in the work place over which Fiam has no control. For all further details, please apply to the **Fiam Technical Assistance Service**.

Air inserting tool IP 900

Other technical features

Accessories available upon request

- Bits for male and female insulated or non-insulated electric connectors with a pitch of 6.35 mm.

Bits for connectors

Code 635856010



Length max 50 mm.
Can be used only for male and female **non-insulated** electric connectors.

Bits for connectors

Code 635856015



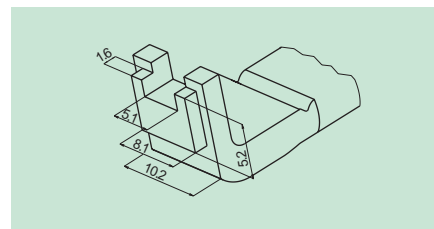
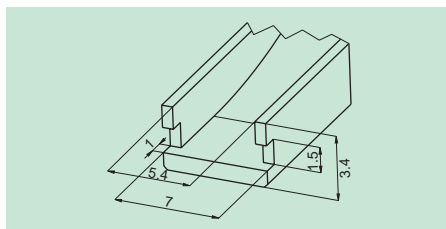
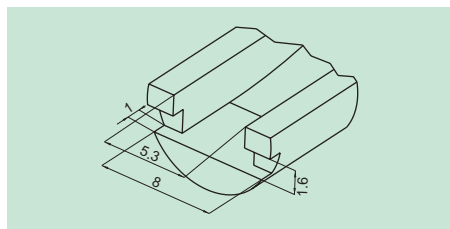
Length max 50 mm.
Can be used only for male and female **insulated** electric connectors.

Bits for connectors

Code 635856020



Length max 51 mm.
Can be used only for male and female electric connectors, both **insulated and non-insulated**. The special form of the head aids the "guided" insertion of the insulated electric connector.



- On request or according to drawing, special bits can be supplied **for every other type of electric connector**. Specify the pitch and send a sample.
- Bits, hexagonal sockets; balancers, exhaust silencers and other compressed air system accessories: see Accessories catalogue.

Fiam

INDUSTRIAL AIR TOOLS

Fiam Utensili Pneumatici spa
Viale Crispi, 123 - 36100 Vicenza / Italy
Tel. +39.0444.385000 - Fax +39.0444.385002
customerservice@fiamairtools.com
www.fiamairtools.com



Quality Certification
UNI EN ISO 9001 / ICIM 0250

Environmental Management System Certificate
UNI EN ISO 14001 / ICIM 0002A/0

